

Admin
of
idgard Sync

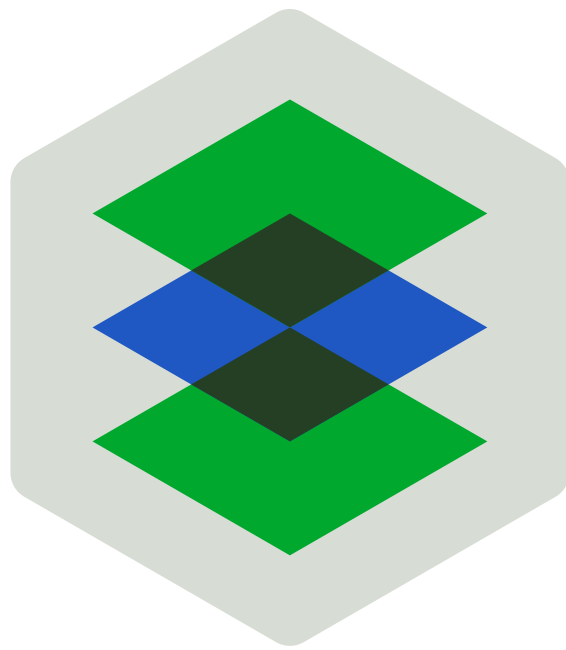


Table of Contents

Admin	4
Installer	
MSI-Setup Screenshots	5
Deployment Guide	7

Administration

Welcome to *Admin* of **idgard Sync**.

The idgard Sync is a Windows app that brings your idgard workspace directly into your daily desktop workflow.

NOTE

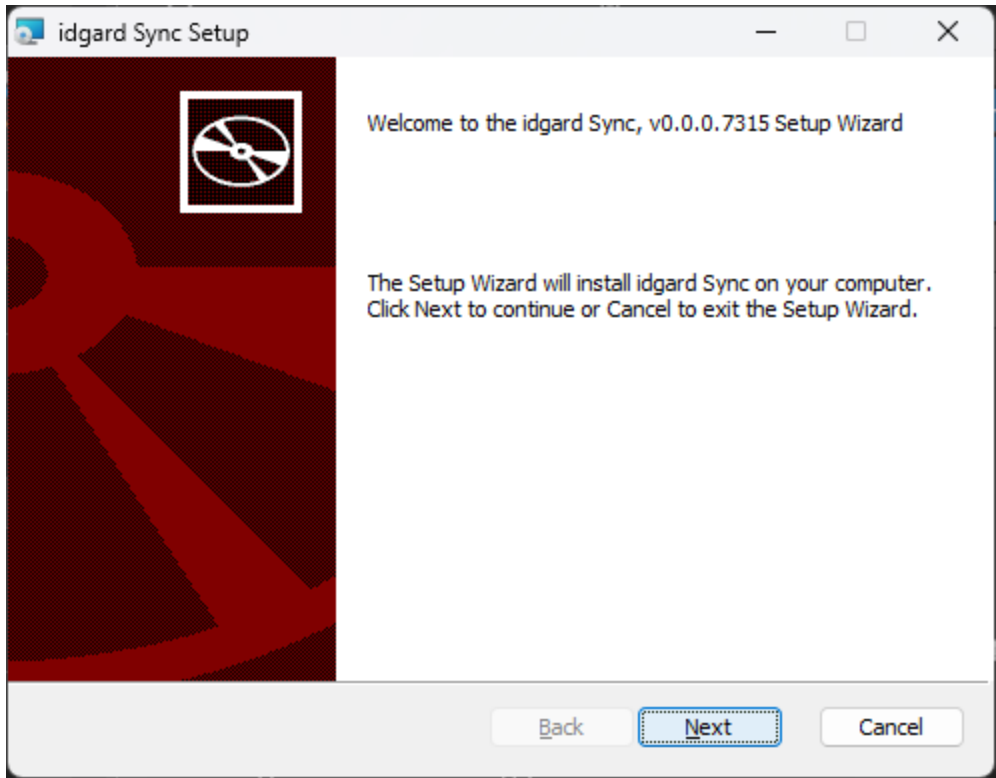
With idgard Sync, your files are available in Windows Explorer just like a familiar cloud drive, while keeping the security standards of idgard.

Installer

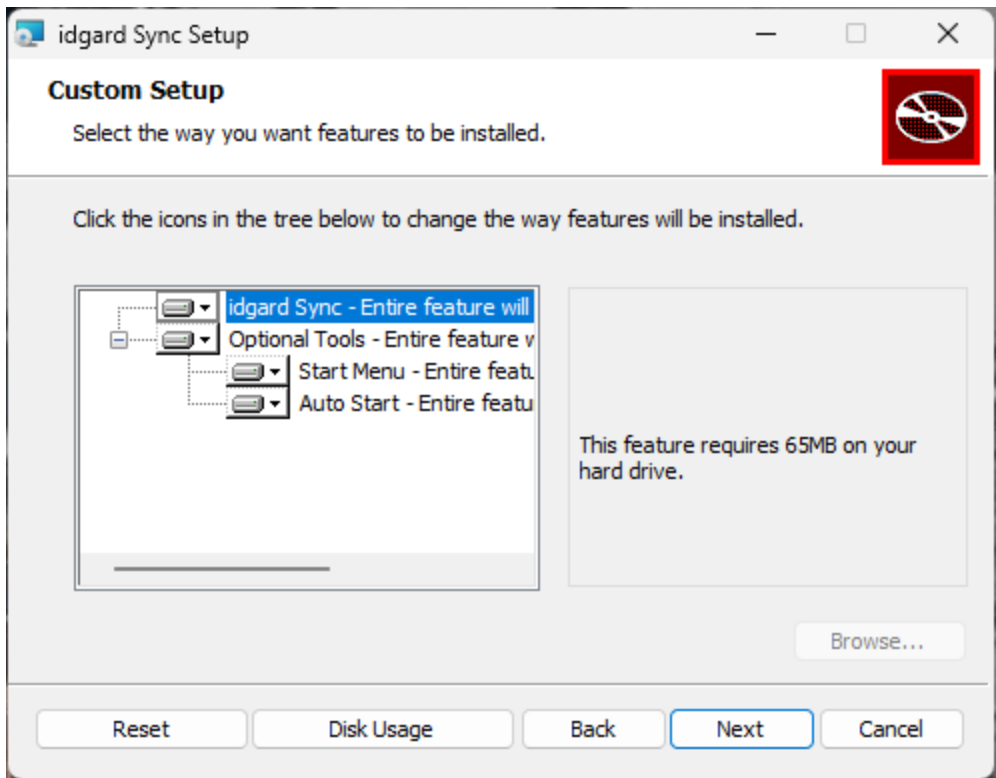
- [Screenshots](#)
- How-Tos
 - [Deployment Guide](#)
 - [Detect installed version](#)

MSI-Setup Screenshots

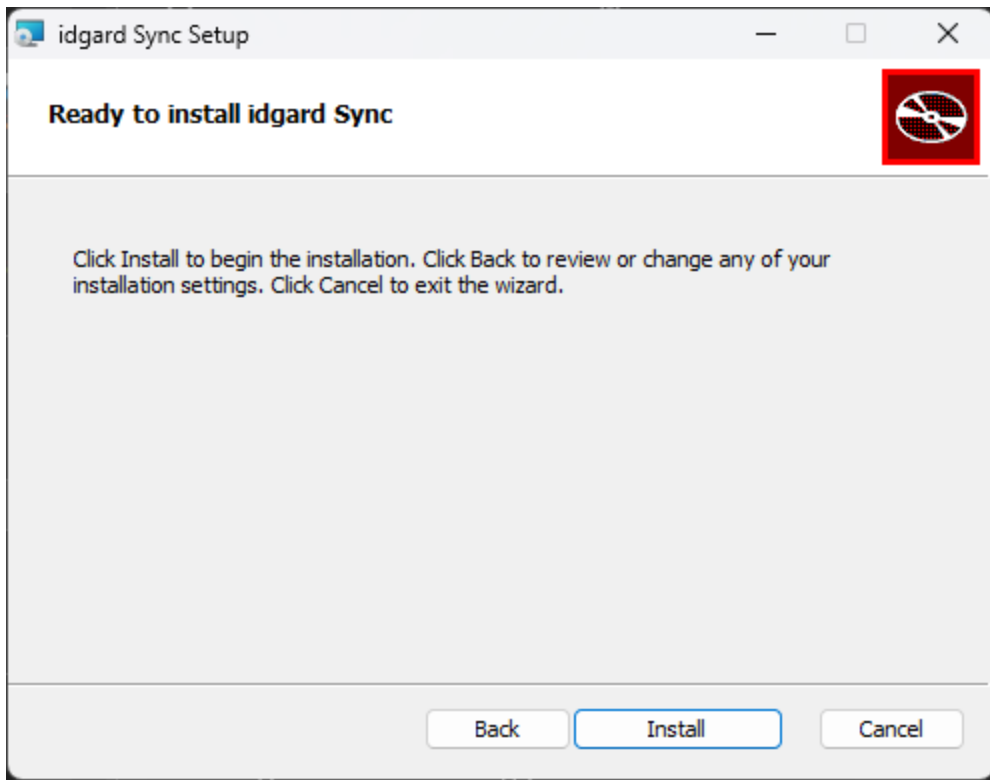
We are using an next-next-next-finish setup approach



Welcome Dialog

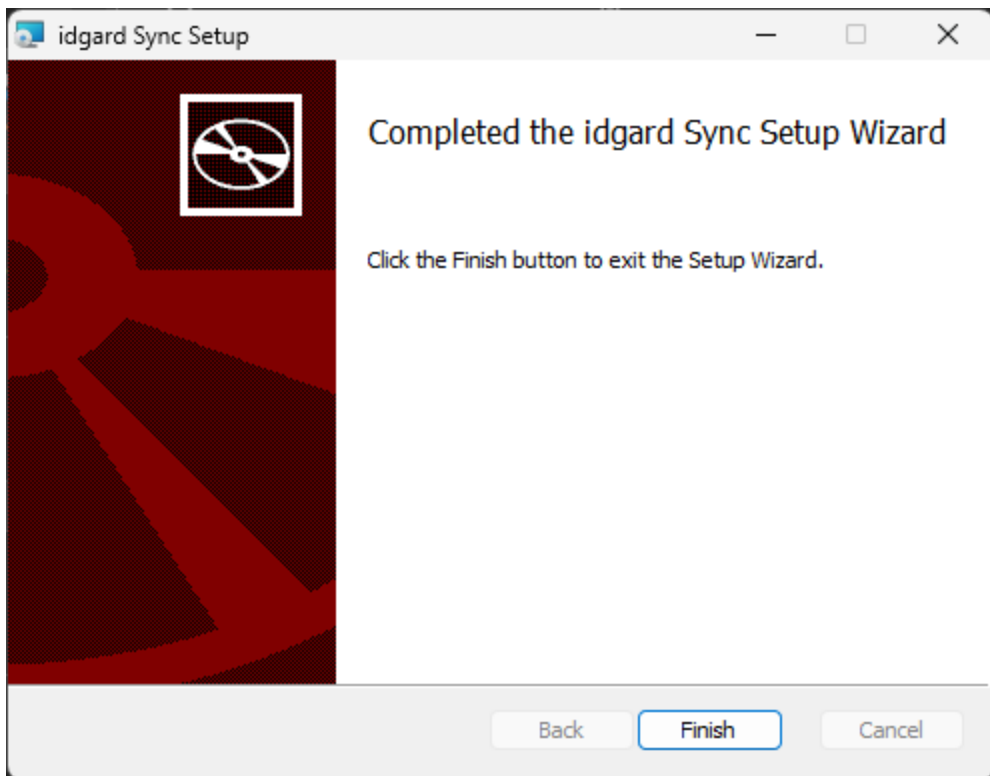


Feature Tree



Confirm Dialog

UAC - User Access Control to ask for admin permission.



Finish Dialog

Deployment Guide

This guide explains common ways to deploy an MSI package, from interactive installation to fully automated rollout.

NOTE

Use **Full UI** → for manual user installs.

Use **Silent** → MSIEXEC for enterprise automation.

Best practices

- Keep deployment steps predictable and repeatable
- Use logging for unattended installs
- Validate the installation result after rollout

Full UI Installation (Next → Next → Finish)

Use this when a user installs manually on a workstation (user needs admin-rights).

Steps

1. Double-click the `.msi` file.
2. Follow the [installer wizard](#).
3. Click **Next** through the dialogs.
4. Click **Finish** at the end.

NOTE

Best for

- manual installs
- Small-scale business
- IT-assisted guided setup

Silent Installation (`msiexec` with no UI)

Use this for unattended deployment via scripts, Intune, SCCM, GPO, or RMM tools.

```
msiexec /i "setup.msi" /qn /norestart
```

Useful options

- `/i` = install package
- `/qn` = no UI (silent)
- `/norestart` = do not restart automatically
- `/l*v "C:\Temp\install.log"` = verbose logging

Example with logging:

```
msiexec /i "setup.msi" /qn /norestart /l*v "C:\Temp\install.log"
```

 **NOTE**

Best for

- installs with detail information
- Mid-scale business
- IT-centralized setup